

BUIZEN & TOEBEHOREN/TUBES & ACCESSOIRES

INHOUDSTAFEL / TABLE DES MATIERES

| | |
|--|----|
| INHOUDSTAFEL / TABLE DES MATIERES..... | 1 |
| NAADLOZE HOGEDRUKBUIS / TUBE SANS SOUDURE | 2 |
| KOPER / CUIVRE..... | 3 |
| BUISKLEMMEN / SUPPORT TUYAUTERIE | 4 |
| BUISKLEMMEN MET BOVENPLAAT SUPPORT TUYAUTERIE AVEC PLAQUE SUPERIEURE | 5 |
| ONDERDELEN VOOR BUISKLEMMEN / ACCESSOIRES POUR SUPPORT TUYAUTERIE..... | 6 |
| DUBBELE BUISKLEMMEN / DOUBLES SUPPORT TUYAUTERIE | 12 |
| ONDERDELEN VOOR DUBBELE BUISKLEMMEN | 13 |
| ACCESSOIRES POUR DOUBLES SUPPORTS | 13 |
| BUISKLEMMEN TYPE "HEAVY DUTY" / SUPPORTS TUYAUTERIE "HEAVY DUTY" | 16 |
| ONDERDELEN VOOR "HEAVY DUTY" / ACCESSOIRES POUR "HEAVY DUTY" | 17 |

BUIZEN & TOEBEHOREN/TUBES & ACCESSOIRES

NAADLOZE HOGEDRUKBUIZ / TUBE SANS SOUDURE

KOUDGETROKKEN STALEN BUIZEN VOLGENS ISO-10763

TUBE ETIRE A FROID SUIVANT NORME ISO-10763

| Art.N° | Werkdruk Pression de travail Bar | Barstdruk Pression d'éclat |
|-----------------|---|----------------------------------|
| HDSB 4x1 | 624 | 2495 |
| HDSB 5x1 | 460 | 1839 |
| HDSB 6x1 | 365 | 1460 |
| HDSB 6x1,5 | 624 | 2495 |
| HDSB 8x1 | 259 | 1036 |
| HDSB 8x1,5 | 423 | 1692 |
| HDSB 8x2 | 624 | 2495 |
| HDSB 10x1 | 201 | 803 |
| HDSB 10x1,5 | 321 | 1284 |
| HDSB 10x2 | 460 | 1839 |
| HDSB 10x2,5 | 624 | 2495 |
| HDSB 12x1 | 164 | 656 |
| HDSB 12x1,5 | 259 | 1036 |
| HDSB 12x2 | 365 | 1460 |
| HDSB 13,25x2,35 | 373 | 1494 |
| HDSB 14x1,5 | 217 | 868 |
| HDSB 14x2 | 303 | 1211 |
| HDSB 15x1 | 129 | 515 |
| HDSB 15x1,5 | 201 | 803 |
| HDSB 15x2 | 279 | 1117 |
| HDSB 15x2,5 | 365 | 1460 |
| HDSB 16x1 | 120 | 481 |
| HDSB 16x1,5 | 187 | 748 |
| HDSB 16x2 | 259 | 1036 |
| HDSB 16,75x2,25 | 282 | 1126 |
| HDSB 18x1,5 | 164 | 656 |
| HDSB 18x2 | 226 | 905 |
| HDSB 18x2,5 | 293 | 1172 |
| HDSB 20x2 | 201 | 803 |
| HDSB 20x2,5 | 259 | 1036 |



** ook verkrijgbaar in GALVA en INOX
** aussi livrable en GALVA et en INOX

| | | |
|-----------------|-----|------|
| HDSB 20x3 | 321 | 1284 |
| HDSB 21,25x2,75 | 270 | 1078 |
| HDSB 22x1,5 | 132 | 528 |
| HDSB 22x2 | 181 | 722 |
| HDSB 22x3 | 287 | 1146 |
| HDSB 22x4 | 407 | 1627 |
| HDSB 25x2 | 157 | 628 |
| HDSB 25x2,5 | 201 | 803 |
| HDSB 25x3 | 247 | 988 |
| HDSB 25X4 | 347 | 1388 |
| HDSB 26,75x2,75 | 207 | 829 |
| HDSB 28x1,5 | 102 | 408 |
| HDSB 28x2 | 139 | 555 |
| HDSB 28x3 | 217 | 868 |
| HDSB 30x2 | 129 | 515 |
| HDSB 30x3 | 201 | 803 |
| HDSB 30x4 | 279 | 1117 |
| HDSB 32x3 | 187 | 748 |
| HDSB 33,5X3,25 | 194 | 777 |
| HDSB 35x2 | 109 | 437 |
| HDSB 35x3 | 169 | 677 |
| HDSB 35x4 | 234 | 934 |
| HDSB 38x4 | 213 | 851 |
| HDSB 38x5 | 275 | 1099 |
| HDSB 40x2 | 95 | 379 |
| HDSB 40x4 | 201 | 803 |
| HDSB 40x5 | 259 | 1036 |
| HDSB 42x2 | 94 | 376 |
| HDSB 42x3 | 139 | 555 |

BUIZEN & TOEBEHOREN/TUBES & ACCESSOIRES

KOPER / CUIVRE

KOPEREN LEIDING / TUYAU EN CUIVRE

Naadloos in lengte van 5m of 10m
In karton verpakt

Sans soudures en longueurs de 5m ou 10m
Emballé dans une boîte

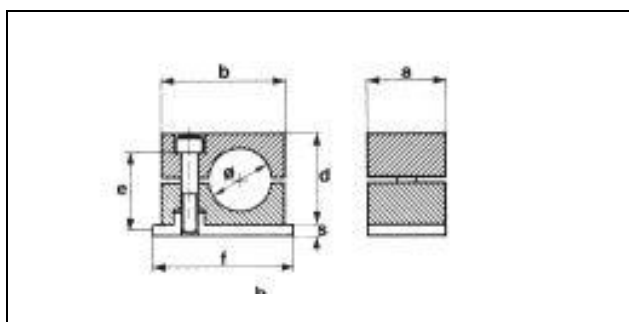
ZIE RUBRIEK "U" REMKOPPELINGEN EN –
LEIDINGEN
VOIR RUBRIQUE "U" TUYAUX DE FREIN ET
NIPPLES

BUIZEN & TOEBEHOREN/TUBES & ACCESSOIRES

BUISKLEMMEN / SUPPORT TUYAUTERIE

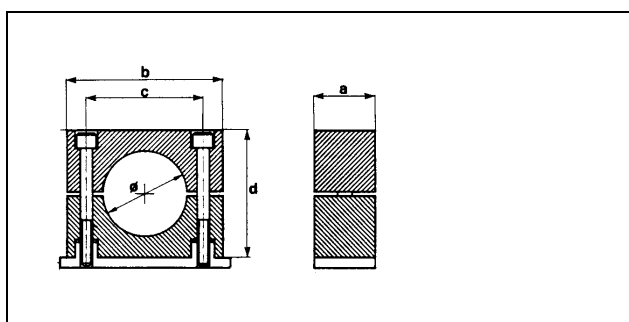
S0- BUISKLEM / SUPPORT TUYAUTERIE

| Art.N° | b m/m | c m/m | d m/m |
|--------|-------|-------|-------|
| S0-06 | 28 | - | 27 |
| S0-08 | 28 | - | 27 |
| S0-10 | 28 | - | 27 |
| S0-12 | 28 | - | 27 |



S- BUISKLEM / SUPPORT TUYAUTERIE

| Art.N° | b m/m | c m/m | d m/m |
|---------------|-------|-------|-------|
| S1-06 | 34 | 20 | 27 |
| S1-08 | 34 | 20 | 27 |
| S1-10 (1/8) | 34 | 20 | 27 |
| S1-12 | 34 | 20 | 27 |
| S2-14 | 40 | 26 | 33 |
| S2-15 | 40 | 26 | 33 |
| S2-16 | 40 | 26 | 33 |
| S2-18 | 40 | 26 | 33 |
| S2-19 | 40 | 26 | 33 |
| S2-1/4 (13,5) | 40 | 26 | 33 |
| S2-3/8 (17,2) | 40 | 26 | 33 |
| S3-19 | 48 | 33 | 35 |
| S3-20 | 48 | 33 | 35 |
| S3-22 | 48 | 33 | 35 |
| S3-25 | 48 | 33 | 35 |
| S3-1/2 (21,3) | 48 | 33 | 35 |
| S4-28 | 57 | 40 | 42 |
| S4-30 | 57 | 40 | 42 |



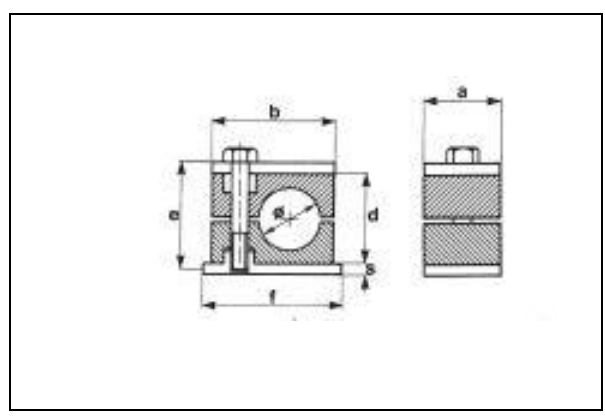
| | | | |
|-----------------|----|----|----|
| S4-32 | 57 | 40 | 42 |
| S4-3/4 (26,9) | 57 | 40 | 42 |
| S5-1 (33,7) | 68 | 52 | 58 |
| S5-35 | 68 | 52 | 58 |
| S5-38 | 68 | 52 | 58 |
| S5-40 | 68 | 52 | 58 |
| S5-42 (1 1/4) | 68 | 52 | 58 |
| S5-45 | 68 | 52 | 58 |
| S6-44,5 | 86 | 66 | 66 |
| S6-48,3 (1 1/2) | 86 | 66 | 66 |
| S6-50,8 | 86 | 66 | 66 |



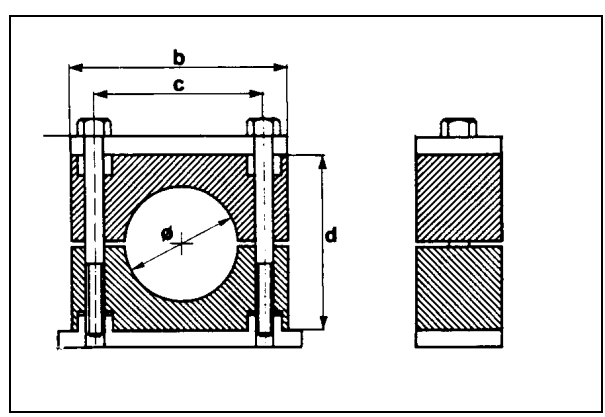
BUIZEN & TOEBEHOREN/TUBES & ACCESSOIRES

BUISKLEMMEN MET BOVENPLAAT SUPPORT TUYAUTERIE AVEC PLAQUE SUPERIEURE

| S0-UPH | Buis klem met bovenplaat Support avec plaque supérieure | | |
|----------|--|---|----|
| Art.N° | b | c | d |
| S0-06UPH | 28 | - | 27 |
| S0-08UPH | 28 | - | 27 |
| S0-10UPH | 28 | - | 27 |
| S0-12UPH | 28 | - | 27 |



| S-UPH | Buis klem met bovenplaat Support avec plaque supérieure | | |
|------------------|--|----|----|
| Art.N° | b | c | d |
| S1-06UPH | 34 | 20 | 27 |
| S1-08UPH | 34 | 20 | 27 |
| S1-10UPH (1/8) | 34 | 20 | 27 |
| S1-12UPH | 34 | 20 | 27 |
| S2-14UPH | 40 | 26 | 33 |
| S2-15UPH | 40 | 26 | 33 |
| S2-16UPH | 40 | 26 | 33 |
| S2-18UPH | 40 | 26 | 33 |
| S2-19UPH | 40 | 26 | 33 |
| S2-1/4UPH (13,5) | 40 | 26 | 33 |
| S2-3/8UPH (17,2) | 40 | 26 | 33 |
| S3-19UPH | 48 | 33 | 35 |
| S3-20UPH | 48 | 33 | 35 |
| S3-22UPH | 48 | 33 | 35 |
| S3-25UPH | 48 | 33 | 35 |
| S3-1/2UPH (21,3) | 48 | 33 | 35 |
| S4-28UPH | 57 | 40 | 42 |



| | | | |
|--------------------|----|----|----|
| S4-30UPH | 57 | 40 | 42 |
| S4-32UPH | 57 | 40 | 42 |
| S4-3/4UPH (26,9) | 57 | 40 | 42 |
| S5-1UPH (33,7) | 68 | 52 | 58 |
| S5-35UPH | 68 | 52 | 58 |
| S5-38UPH | 68 | 52 | 58 |
| S5-40UPH | 68 | 52 | 58 |
| S5-42UPH (1 1/4) | 68 | 52 | 58 |
| S5-45UPH | 68 | 52 | 58 |
| S6-44,5UPH | 86 | 66 | 66 |
| S6-48,3UPH (1 1/2) | 86 | 66 | 66 |
| S6-50,8UPH | 86 | 66 | 66 |



BUIZEN & TOEBEHOREN/TUBES & ACCESSOIRES

ONDERDELEN VOOR BUISKLEMMEN / ACCESSOIRES POUR SUPPORT TUYAUTERIE

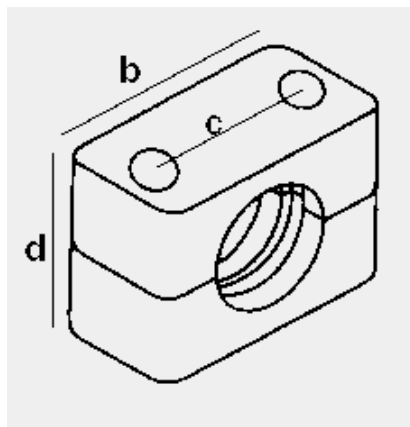
ONDERDELEN VOOR S & S-UPH

ACCESSOIRES POUR S & S-UPH

S-C Halve manen in polypropyleen per paar

Demi-lunes en polypropylène par paire

| Art.N° | b m/m | c m/m | d m/m |
|----------------|-------|-------|-------|
| S0-06C | 28 | - | 27 |
| S0-08C | 28 | - | 27 |
| S0-10C | 28 | - | 27 |
| S0-12C | 28 | - | 27 |
| S1-06C | 35 | 20 | 27 |
| S1-08C | 35 | 20 | 27 |
| S1-10C (1/8) | 35 | 20 | 27 |
| S1-12C | 35 | 20 | 27 |
| S2-14C | 41 | 26 | 33 |
| S2-15C | 41 | 26 | 33 |
| S2-16C | 41 | 26 | 33 |
| S2-18C | 41 | 26 | 33 |
| S2-19C | 41 | 26 | 33 |
| S2-1/4C (13,5) | 41 | 26 | 33 |
| S2-3/8C (17,2) | 41 | 26 | 33 |
| S3-19C | 48 | 33 | 35 |
| S3-20C | 48 | 33 | 35 |
| S3-22C | 48 | 33 | 35 |
| S3-25C | 48 | 33 | 35 |
| S3-1/2C (21,3) | 48 | 33 | 35 |
| S4-28C | 57 | 40 | 42 |



| | | | |
|------------------|----|----|----|
| S4-30C | 57 | 40 | 42 |
| S4-32C | 57 | 40 | 42 |
| S4-3/4C (26,9) | 57 | 40 | 42 |
| S5-1C (33,7) | 69 | 52 | 58 |
| S5-35C | 69 | 52 | 58 |
| S5-38C | 69 | 52 | 58 |
| S5-40C | 69 | 52 | 58 |
| S5-42C (1 1/4) | 69 | 52 | 58 |
| S5-45C | 69 | 52 | 58 |
| S6-44,5C | 86 | 66 | 66 |
| S6-48,3C (1 1/2) | 86 | 66 | 66 |
| S6-50,8C | 86 | 66 | 66 |

* ook verkrijgbaar in polyamide, rubber en aluminium

* aussi livrable en polyamide, caoutchouc et aluminium

BUIZEN & TOEBEHOREN/TUBES & ACCESSOIRES

ONDERDELEN VOOR BUISKLEMMEN / ACCESSOIRES POUR SUPPORT TUYAUTERIE

ONDERDELEN VOOR S & S-UPH

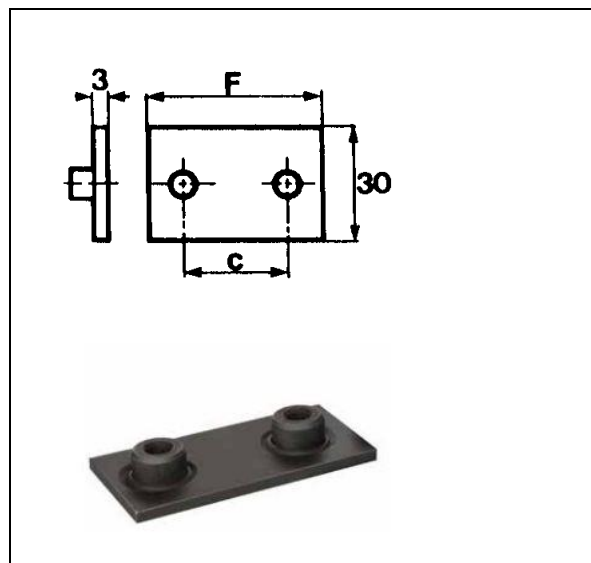
ACCESSOIRES POUR S & S-UPH

S-LSP

Onderplaat

Plaque inférieure

| Art.N° | F m/m | C m/m |
|--------|-------|-------|
| S0LSP | 32 | - |
| S1LSP | 41 | 20 |
| S2LSP | 46 | 26 |
| S3LSP | 54 | 33 |
| S4LSP | 61 | 40 |
| S5LSP | 73 | 52 |
| S6LSP | 89 | 66 |

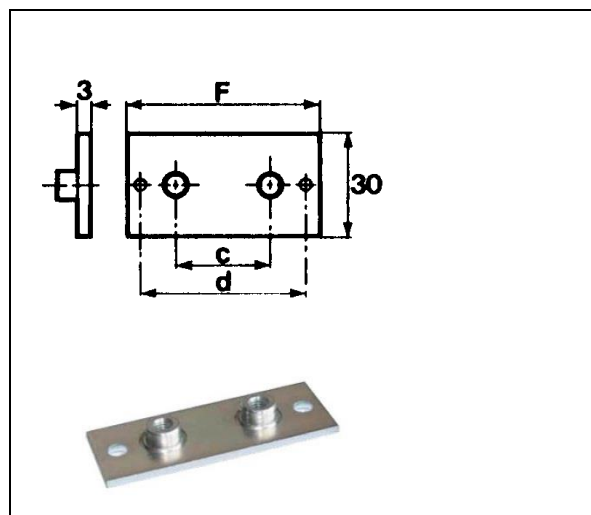


S-LLP

Onderplaat verlengd

Plaque inférieure prolongée

| Art.N° | F m/m | C m/m | D m/m |
|--------|-------|-------|-------|
| S0LLP | 46 | - | - |
| S1LLP | 64 | 20 | 51 |
| S2LLP | 70 | 26 | 56 |
| S3LLP | 78 | 33 | 64 |
| S4LLP | 87 | 40 | 73 |
| S5LLP | 100 | 52 | 86 |
| S6LLP | 115 | 66 | 100 |

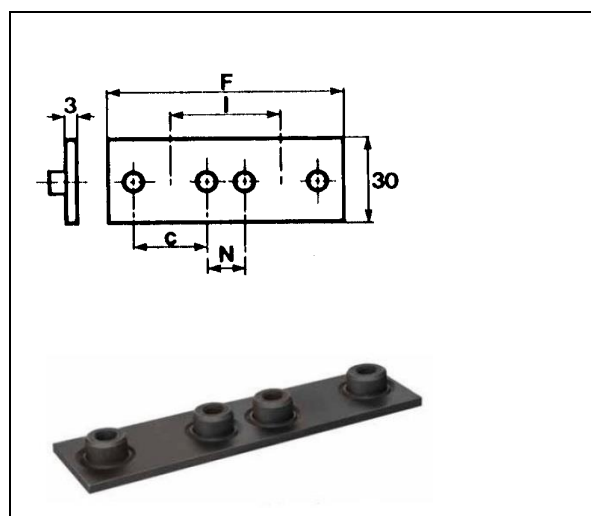


S-LDP

Onderplaat dubbel

Plaque inférieure double

| Art.N° | F m/m | C m/m | N m/m | I m/m |
|--------|-------|-------|-------|-------|
| S0LDP | 62 | - | - | 30 |
| S1LDP | 82 | 20 | 20 | 40 |
| S2LDP | 92 | 26 | 18 | 44 |
| S3LDP | 106 | 33 | 19 | 52 |
| S4LDP | 122 | 40 | 20 | 60 |
| S5LDP | 146 | 52 | 23 | 75 |
| S6LDP | 178 | 66 | 24 | 90 |

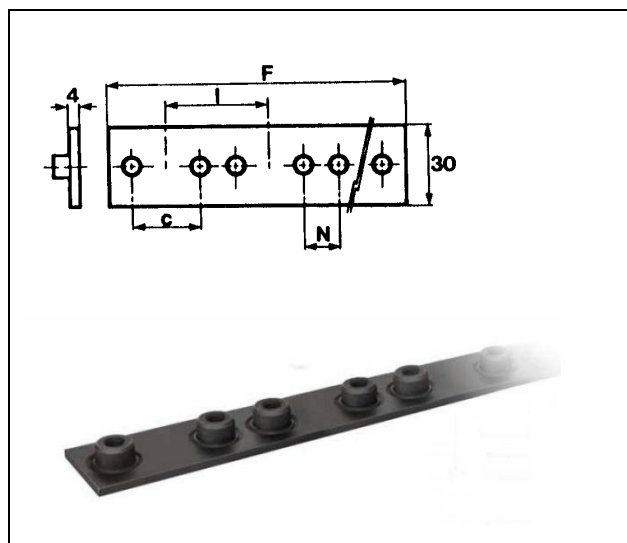


BUIZEN & TOEBEHOREN/TUBES & ACCESSOIRES

ONDERDELEN VOOR BUISKLEMMEN / ACCESSOIRES POUR SUPPORT TUYAUTERIE

S-LMP Onderplaat meervoudig Plaque inférieure multiple

| Art.N° | F m/m | C m/m | N m/m | I m/m |
|--------|-------|-------|-------|-------|
| S0LMP | 307 | - | - | 30 |
| S1LMP | 410 | 20 | 20 | 40 |
| S2LMP | 460 | 26 | 18 | 44 |
| S3LMP | 540 | 33 | 19 | 52 |
| S4LMP | 305 | 40 | 20 | 60 |
| S5LMP | 365 | 52 | 23 | 75 |
| S6LMP | 449 | 66 | 24 | 90 |



S-I Standaardbout voor S-serie Vis standard pour série S Bout / Vis inhex

| Art.N° |
|-----------------|
| S0I (6 x 20 mm) |
| S1I (6 x 20 mm) |
| S2I (6 x 25 mm) |
| S3I (6 x 30 mm) |
| S4I (6 x 35 mm) |
| S5I (6 x 50 mm) |
| S6I (6 x 60 mm) |



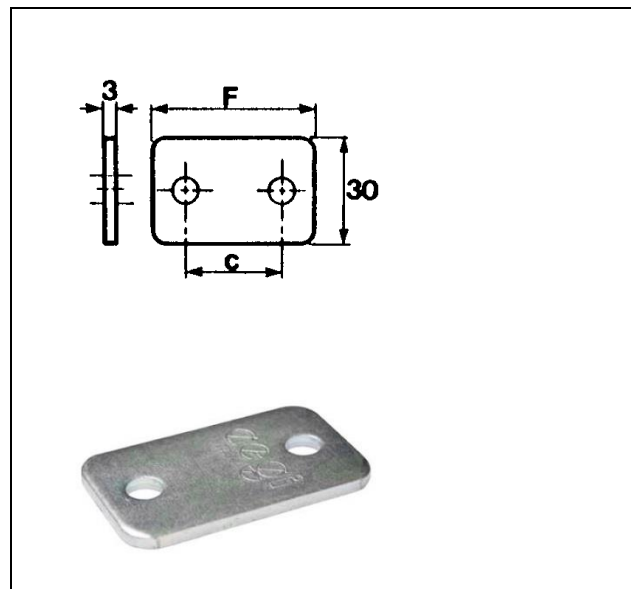
BUIZEN & TOEBEHOREN/TUBES & ACCESSOIRES

ONDERDELEN VOOR BUISKLEMMEN / ACCESSOIRES POUR SUPPORT TUYAUTERIE

ONDERDELEN VOOR S-UPH SERIE ACCESSOIRES POUR SERIE S-UPH

S-UP **Bovenplaat**
Plaque supérieure

| Art.N° | F m/m | C m/m |
|--------|-------|-------|
| S0UP | 28 | - |
| S1UP | 37 | 20 |
| S2UP | 43 | 26 |
| S3UP | 50 | 33 |
| S4UP | 57 | 40 |
| S5UP | 69 | 52 |
| S6UP | 83 | 66 |



ONDERDELEN VOOR S-H SERIE ACCESSOIRES POUR SERIE S-H

S-H **Bout zeskant**
Vis hexagone

| Art.N° |
|-----------------|
| S0H (6 x 30 mm) |
| S1H (6 x 30 mm) |
| S2H (6 x 35 mm) |
| S3H (6 x 40 mm) |
| S4H (6 x 45 mm) |
| S5H (6 x 60 mm) |
| S6H (6 x 70 mm) |



BUIZEN & TOEBEHOREN/TUBES & ACCESSOIRES

ONDERDELEN VOOR BUISKLEMMEN / ACCESSOIRES POUR SUPPORT TUYAUTERIE

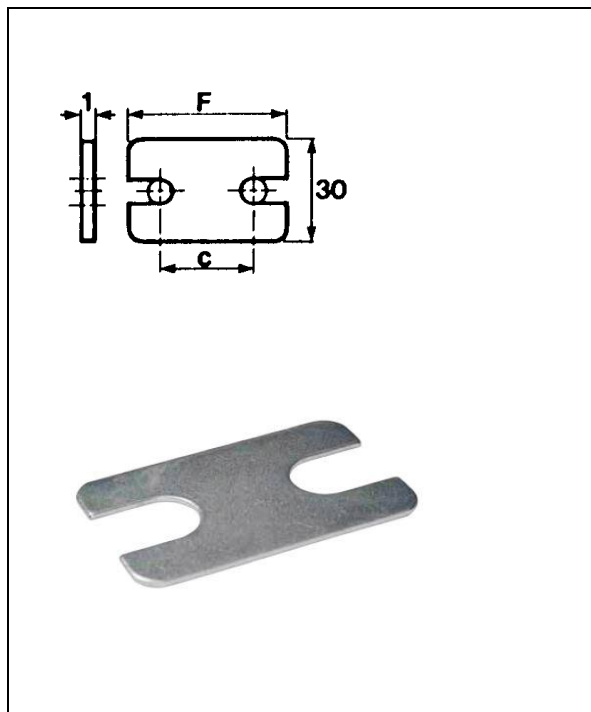
ONDERDELEN VOOR STAPELBARE KLEMMEN

ACCESSOIRES POUR SUPPORT D'EMPILAGE

S-SUP

Tussenplaat
Plaque intermédiaire

| Art.N° | F m/m | C m/m |
|--------|-------|-------|
| S0SUP | 28 | - |
| S1SUP | 34 | 20 |
| S2SUP | 41 | 26 |
| S3SUP | 47 | 33 |
| S4SUP | 57 | 40 |
| S5SUP | 67 | 52 |
| S6SUP | 82 | 66 |



ONDERDELEN VOOR STAPELBARE KLEMMEN

ACCESSOIRES POUR SUPPORT D'EMPILAGE

S-LI

Stapelbout
Vis intermédiaire d'empilage

| Art.N° |
|------------------|
| S0LI (6 x 20 mm) |
| S1LI (6 x 20 mm) |
| S2LI (6 x 25 mm) |
| S3LI (6 x 30 mm) |
| S4LI (6 x 35 mm) |
| S5LI (6 x 50 mm) |
| S6LI (6 x 60 mm) |



BUIZEN & TOEBEHOREN/TUBES & ACCESSOIRES

ONDERDELEN VOOR BUISKLEMMEN / ACCESSOIRES POUR SUPPORT TUYAUTERIE

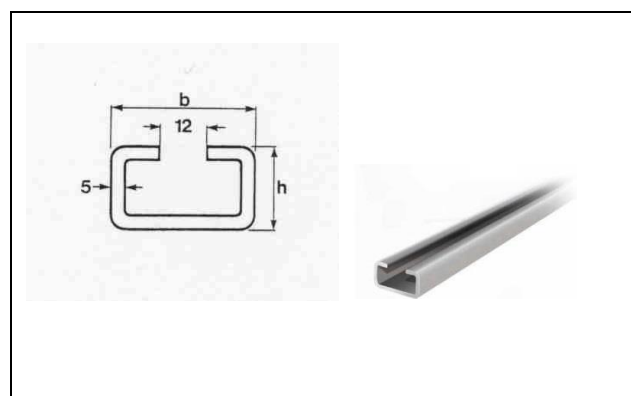
ONDERDELEN VOOR S- SERIE

ACCESSOIRES POUR SERIE S

S-RAIL

Instelbare rail Rail coulisse

| Art.N° | b | h |
|-----------------|----|----|
| S1-RAIL | 28 | 11 |
| Lengte : 2 M. | | |
| Longueur : 2 M. | | |



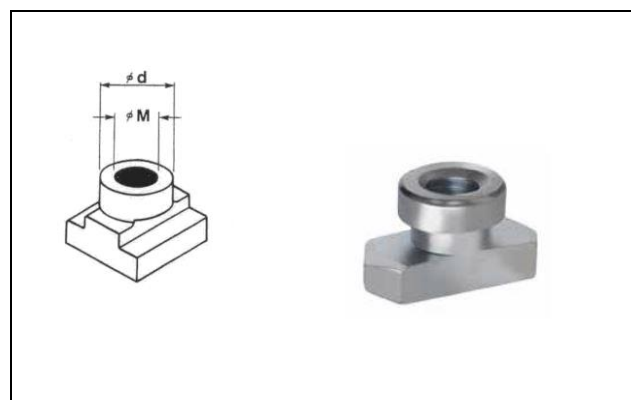
ONDERDELEN VOOR S SERIE

ACCESSOIRES POUR SERIE S

S-RAILFIX

Moer voor s-rail Ecrou pour rail

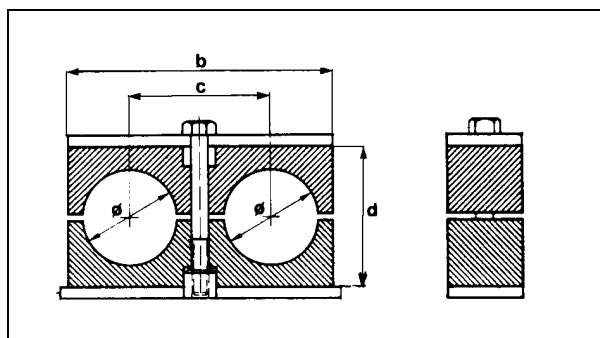
| Art.N° | M | d |
|----------|----|----|
| SRAILFIX | M6 | 12 |
| | | |
| | | |



BUIZEN & TOEBEHOREN/TUBES & ACCESSOIRES

DUBBELE BUISKLEMMEN / DOUBLES SUPPORT TUYAUTERIE

| DC-H | Buisklem dubbel Double support tuyauterie | | |
|--------------------|--|-------|-------|
| Art.N° | b m/m | c m/m | d m/m |
| DC1-06-06H | 36 | 20 | 25 |
| DC1-08-08H | 36 | 20 | 25 |
| DC1-10-10H (1/8) | 36 | 20 | 25 |
| DC1-12-12H | 36 | 20 | 25 |
| DC2-14-14H | 53 | 29 | 26 |
| DC2-15-15H | 53 | 29 | 26 |
| DC2-16-16H | 53 | 29 | 26 |
| DC2-18-18H | 53 | 29 | 26 |
| DC2-1/4-1/4H(13,5) | 53 | 29 | 26 |
| DC2-3/8-3/8H(17,2) | 53 | 29 | 26 |
| DC3-19-19H | 67 | 36 | 37 |
| DC3-20-20H | 67 | 36 | 37 |
| DC3-22-22H | 67 | 36 | 37 |
| DC3-25-25H | 67 | 36 | 37 |
| DC3-1/2-1/2H(21,3) | 67 | 36 | 37 |



| | | | |
|--------------------|-----|----|----|
| DC4-28-28H | 82 | 45 | 42 |
| DC4-30-30H | 82 | 45 | 42 |
| DC4-3/4-3/4H(26,9) | 82 | 45 | 42 |
| DC5-35-35H | 106 | 56 | 54 |
| DC5-38-38H | 106 | 56 | 54 |
| DC5-42-42H (1 1/4) | 106 | 56 | 54 |
| DC5-1-1H(33,7) | 106 | 56 | 54 |



BUIZEN & TOEBEHOREN/TUBES & ACCESSOIRES

ONDERDELEN VOOR DUBBELE BUISKLEMMEN ACCESSOIRES POUR DOUBLES SUPPORTS

ONDERDELEN VOOR DC

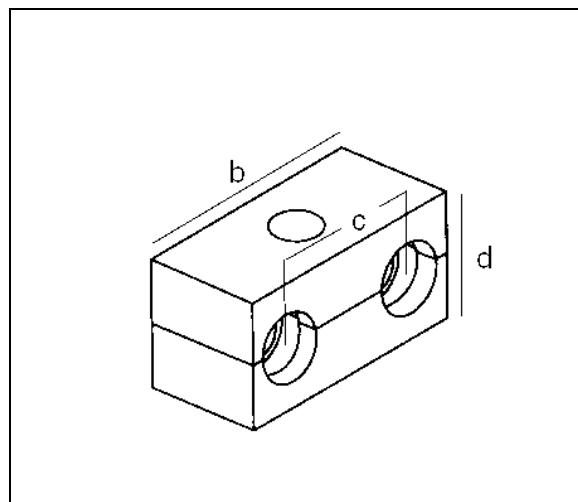
ACCESSOIRES POUR SERIE DC

DC-C

Halve manen in polypropyleen per paar

Demi-lunes en polypropylène par paire

| Art.N° | b m/m | c m/m | d m/m |
|---------------------|-------|-------|-------|
| DC1-06-06C | 36 | 20 | 25 |
| DC1-08-08C | 36 | 20 | 25 |
| DC1-10-10C (1/8) | 36 | 20 | 25 |
| DC1-12-12C | 36 | 20 | 25 |
| DC2-14-14C | 53 | 29 | 26 |
| DC2-15-15C | 53 | 29 | 26 |
| DC2-16-16C | 53 | 29 | 26 |
| DC2-18-18C | 53 | 29 | 26 |
| DC2-1/4-1/4C (13,5) | 53 | 29 | 26 |
| DC2-3/8-3/8C (17,2) | 53 | 29 | 26 |
| DC3-19-19C | 67 | 36 | 37 |
| DC3-20-20C | 67 | 36 | 37 |
| DC3-22-22C | 67 | 36 | 37 |
| DC3-25-25C | 67 | 36 | 37 |



| | | | |
|---------------------|-----|----|----|
| DC3-1/2-1/2C (21,3) | 67 | 36 | 37 |
| DC4-28-28C | 82 | 45 | 42 |
| DC4-30-30C | 82 | 45 | 42 |
| DC4-3/4-3/4C (26,9) | 82 | 45 | 42 |
| DC5-35-35C | 106 | 56 | 54 |
| DC5-38-38C | 106 | 56 | 54 |
| DC5-42-42C (1 1/4) | 106 | 56 | 54 |
| DC5-1-1C (33,7) | 106 | 56 | 54 |

* ook verkrijgbaar in polyamide, rubber en aluminium

* aussi livrable en polyamide, caoutchouc et aluminium

BUIZEN & TOEBEHOREN/TUBES & ACCESSOIRES

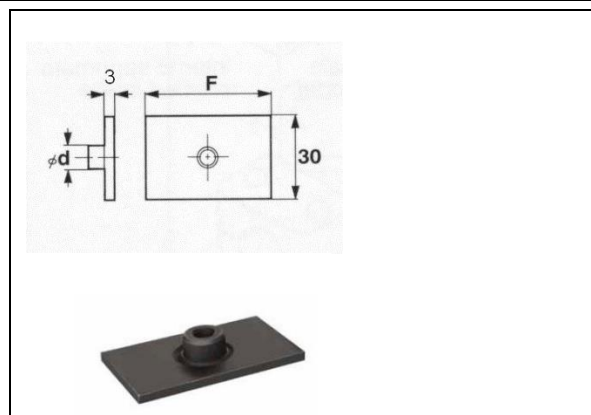
ONDERDELEN VOOR DUBBELE BUISKLEMMEN ACCESSOIRES POUR DOUBLES SUPPORTS

ONDERDELEN VOOR DC SERIE ACCESSOIRES POUR SERIE DC

DC-LSP

Onderplaat
Plaque inférieure

| Art.N° | F m/m | d m/m |
|--------|-------|-------|
| DC1LSP | 30 | 7 |
| DC2LSP | 55 | 9 |
| DC3LSP | 70 | 9 |
| DC4LSP | 85 | 9 |
| DC5LSP | 110 | 9 |

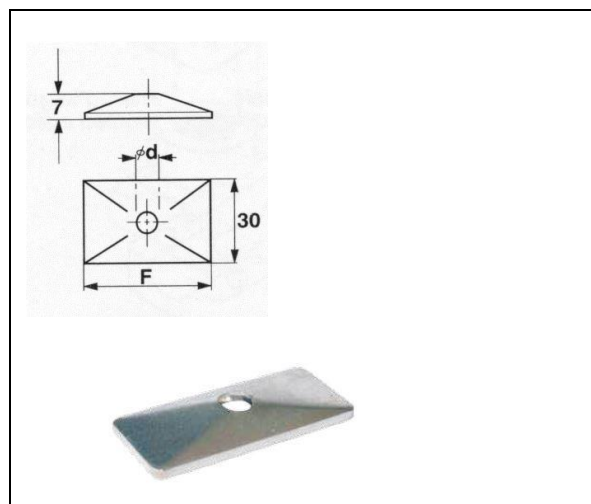


ONDERDELEN VOOR DC SERIE ACCESSOIRES POUR SERIE DC

DC-UP

Bovenplaat
Plaque supérieure

| Art.N° | F m/m | d m/m |
|--------|-------|-------|
| DC1UP | 35 | 20 |
| DC2UP | 52 | 26 |
| DC3UP | 66 | 33 |
| DC4UP | 81 | 40 |
| DC5UP | 105 | 52 |



ONDERDELEN VOOR DC- H SERIE ACCESSOIRES POUR SERIE DC-H

DC-H

Bout zeskant
Vis hexagone

| Art.N° |
|------------------|
| DC1H (6 x 35 mm) |
| DC2H (8 x 35 mm) |
| DC3H (8 x 45 mm) |
| DC4H (8 x 50 mm) |
| DC5H (8 x 60 mm) |



BUIZEN & TOEBEHOREN/TUBES & ACCESSOIRES

ONDERDELEN VOOR DUBBELE BUISKLEMMEN ACCESSOIRES POUR DOUBLES SUPPORTS

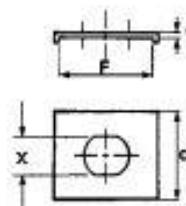
ONDERDELEN VOOR STAPELBARE KLEMMEN

ACCESSOIRES POUR SUPPORT D'EMPILAGE

S-SUP

Tussenplaat
Plaque intermédiaire

| Art.N° | X m/m | F m/m | C m/m |
|--------|-------|-------|-------|
| DC1SUP | 11 | 30 | 30 |
| DC2SUP | 13 | 30 | 30 |
| DC3SUP | 13 | 30 | 30 |
| DC4SUP | 13 | 30 | 30 |
| DC5SUP | 13 | 30 | 30 |
| | | | |
| | | | |



ONDERDELEN VOOR STAPELBARE KLEMMEN

ACCESSOIRES POUR SUPPORT D'EMPILAGE

S-LI

Stapelbout
Vis intermédiaire d'empilage

| Art.N° |
|-------------------|
| DC1LI (8 x 20 mm) |
| DC2LI (8 x 20 mm) |
| DC3LI (8 x 29 mm) |
| DC4LI (8 x 34 mm) |
| DC5LI (8 x 47 mm) |
| |
| |

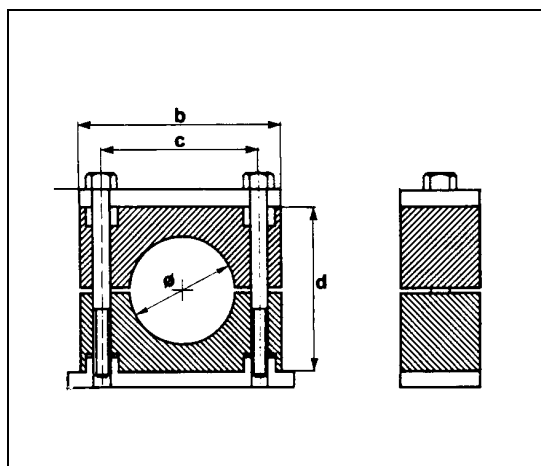


te gebruiken met DC-SUP tussenplaat
A utiliser avec plaque intermédiaire DC-SUP

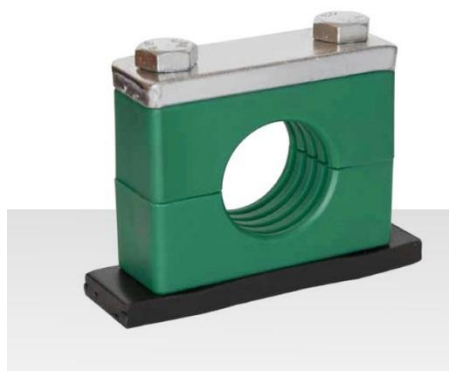
BUIZEN & TOEBEHOREN/TUBES & ACCESSOIRES

BUISKLEMMEN TYPE "HEAVY DUTY" / SUPPORTS TUYAUTERIE "HEAVY DUTY"

| HS-UPH | Buis-klem met bovenplaat Support tuyauterie avec plaque supérieure | | |
|------------------|---|----|----|
| Art.N° | b | c | d |
| HS1-06UPH | 55 | 33 | 32 |
| HS1-1/4UPH | 55 | 33 | 32 |
| HS1-08UPH (5/16) | 55 | 33 | 32 |
| HS1-3/8UPH | 55 | 33 | 32 |
| HS1-10UPH | 55 | 33 | 32 |
| HS1-12UPH | 55 | 33 | 32 |
| HS1-1/2UPH | 55 | 33 | 32 |
| HS1-14UPH | 55 | 33 | 32 |
| HS1-15UPH | 55 | 33 | 32 |
| HS1-16UPH | 55 | 33 | 32 |
| HS1-18UPH | 55 | 33 | 32 |
| HS2-20UPH | 70 | 45 | 48 |
| HS2-22UPH | 70 | 45 | 48 |
| HS2-25UPH | 70 | 45 | 48 |
| HS2-28UPH | 70 | 45 | 48 |
| HS3-30UPH | 85 | 60 | 60 |
| HS3-33,7UPH | 85 | 60 | 60 |
| HS3-35UPH | 85 | 60 | 60 |
| HS3-38UPH | 85 | 60 | 60 |
| HS3-40UPH | 85 | 60 | 60 |



| | | | |
|---------------------|-----|-----|-----|
| HS4-38UPH | 115 | 90 | 90 |
| HS4-42UPH | 115 | 90 | 90 |
| HS4-48,3UPH | 115 | 90 | 90 |
| HS4-50UPH | 115 | 90 | 90 |
| HS4-55UPH | 115 | 90 | 90 |
| HS4-60,3UPH (2") | 115 | 90 | 90 |
| HS4-63,5UPH (2 1/2) | 115 | 90 | 90 |
| HS4-65UPH | 115 | 90 | 90 |
| HS4-70UPH | 115 | 90 | 90 |
| HS5-76,1UPH (3") | 152 | 122 | 120 |
| HS5-80UPH | 152 | 122 | 120 |
| HS5-88,9UPH | 152 | 122 | 120 |



BUIZEN & TOEBEHOREN/TUBES & ACCESSOIRES

ONDERDELEN VOOR "HEAVY DUTY" / ACCESSOIRES POUR "HEAVY DUTY"

ONDERDELEN VOOR HS SERIE

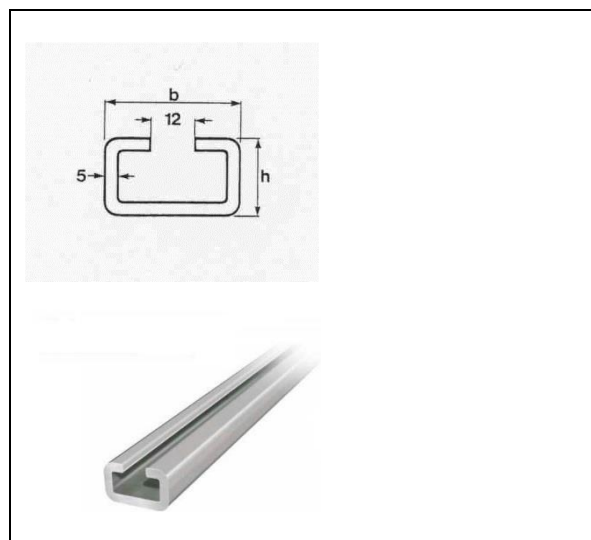
ACCESSOIRES POUR SERIE HS

| | | |
|----------------|--|------------------------|
| HS-RAIL | | Instelbare rail |
| | | Rail coulisse |

| Art.N° | b | h |
|---------|----|----|
| HS-RAIL | 40 | 22 |

Lengthe : 2 M.

Longueur : 2 M.

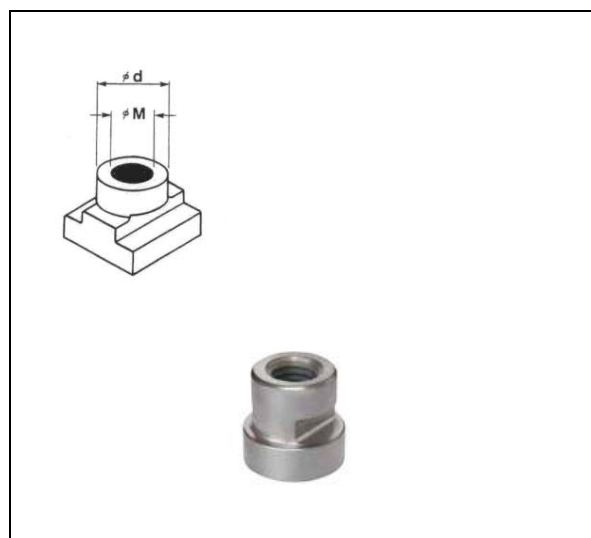


ONDERDELEN VOOR HS SERIE

ACCESSOIRES POUR SERIE HS

| | | |
|-------------------|--|--------------------------|
| HS-RAILFIX | | Moer voor hs-rail |
| | | Ecrou pour rail |

| Art.N° | M | d |
|--------------|-----|----|
| HS-RAILFIX 1 | M10 | 18 |
| HS-RAILFIX 2 | M12 | 20 |



BUIZEN & TOEBEHOREN/TUBES & ACCESSOIRES

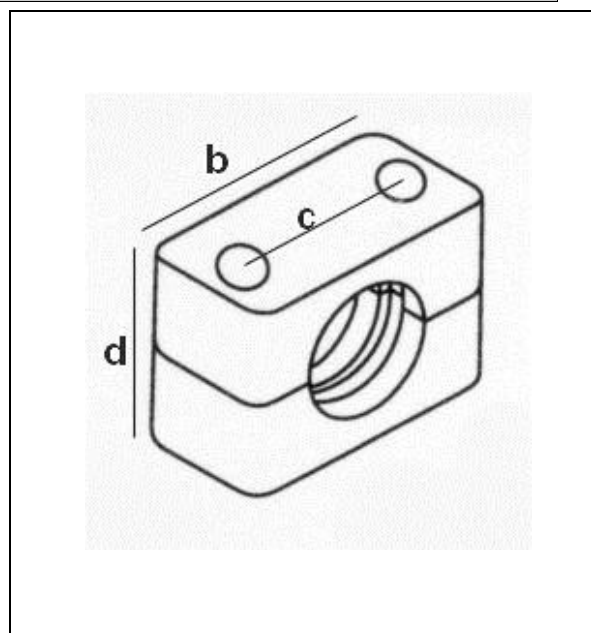
ONDERDELEN VOOR "HEAVY DUTY" / ACCESSOIRES POUR "HEAVY DUTY"

ONDERDELEN VOOR HS SERIE

ACCESSOIRES POUR SERIE HS

HS-C Halve manen in polypropyleen
per paar
Demi-lunes en polypropylène
par paire

| Art.N° | b | c | d |
|----------------|----|----|----|
| HS1-06C | 55 | 33 | 32 |
| HS1-1/4C | 55 | 33 | 32 |
| HS1-08C (5/16) | 55 | 33 | 32 |
| HS1-3/8C | 55 | 33 | 32 |
| HS1-10C | 55 | 33 | 32 |
| HS1-12C | 55 | 33 | 32 |
| HS1-1/2C | 55 | 33 | 32 |
| HS1-14C | 55 | 33 | 32 |
| HS1-15C | 55 | 33 | 32 |
| HS1-16C | 55 | 33 | 32 |
| HS1-18C | 55 | 33 | 32 |
| HS2-20C | 70 | 45 | 48 |
| HS2-22C | 70 | 45 | 48 |
| HS2-25C | 70 | 45 | 48 |
| HS2-28C | 70 | 45 | 48 |
| HS3-30C | 85 | 60 | 60 |
| HS3-33,7C | 85 | 60 | 60 |
| HS3-35C | 85 | 60 | 60 |
| HS3-38C | 85 | 60 | 60 |
| HS3-40C | 85 | 60 | 60 |



| | | | |
|-------------------|-----|-----|-----|
| HS4-38C | 115 | 90 | 90 |
| HS4-42C | 115 | 90 | 90 |
| HS4-48,3C | 115 | 90 | 90 |
| HS4-50C | 115 | 90 | 90 |
| HS4-50,8C | 115 | 90 | 90 |
| HS4-55C | 115 | 90 | 90 |
| HS4-60,3C (2") | 115 | 90 | 90 |
| HS4-63,5C (2 1/2) | 115 | 90 | 90 |
| HS4-65C | 115 | 90 | 90 |
| HS4-70C | 115 | 90 | 90 |
| HS5-76,1C (3") | 152 | 122 | 120 |
| HS5-80C | 152 | 122 | 120 |
| HS5-88,9C | 152 | 122 | 120 |

* ook verkrijgbaar in polyamide, rubber en aluminium

* aussi livrable en polyamide, caoutchouc et aluminium

BUIZEN & TOEBEHOREN/TUBES & ACCESSOIRES

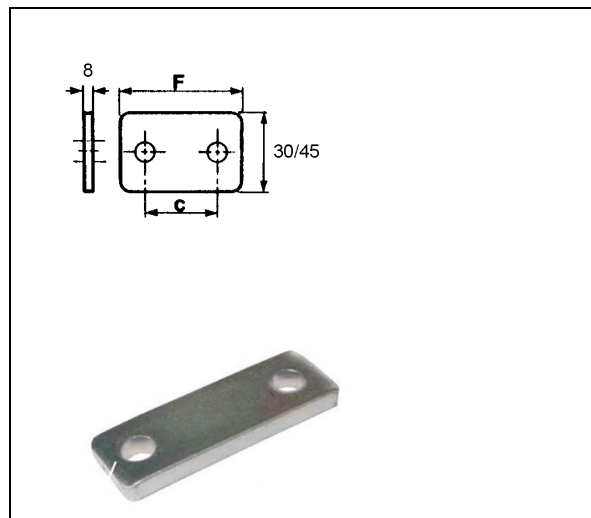
ONDERDELEN VOOR "HEAVY DUTY" / ACCESSOIRES POUR "HEAVY DUTY"

ONDERDELEN VOOR HS SERIE ACCESSOIRES POUR SERIE HS

HS-UP

**Bovenplaat
Plaque supérieure**

| Art.N° | F m/m | C m/m |
|--------|-------|-------|
| HS1-UP | 55 | 33 |
| HS2-UP | 70 | 45 |
| HS3-UP | 85 | 60 |
| HS4-UP | 120 | 90 |
| HS5-UP | 152 | 122 |

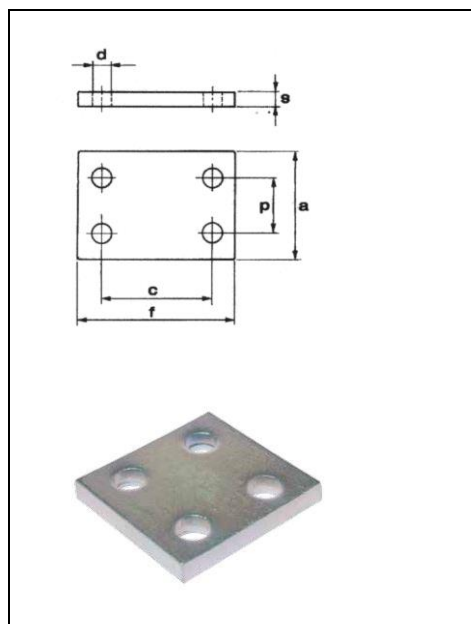


ONDERDELEN VOOR HS SERIE ACCESSOIRES POUR SERIE HS

HS-DUP

**Dubbele bovenplaat
Plaque supérieure double**

| Art.N° | A m/m | P m/m | D m/m | S m/m | F m/m | C m/m |
|---------|-------|-------|-------|-------|-------|-------|
| HS1-DUP | 60 | 31 | 11 | 8 | 55 | 33 |
| HS2-DUP | 60 | 31 | 11 | 8 | 70 | 45 |
| HS3-DUP | 60 | 31 | 11 | 8 | 85 | 60 |
| HS4-DUP | 90 | 46 | 14 | 10 | 120 | 90 |
| HS5-DUP | 120 | 61 | 18 | 10 | 154 | 122 |



BUIZEN & TOEBEHOREN/TUBES & ACCESSOIRES

ONDERDELEN VOOR "HEAVY DUTY" / ACCESSOIRES POUR "HEAVY DUTY"

ONDERDELEN VOOR HS- SERIE

ACCESSOIRES POUR SERIE HS

HS-H **Bout zeskant**
Vis hexagone

Art.N°

HS1H (10 x 45 mm)

HS2H (10 x 60 mm)

HS3H (10 x 70 mm)

HS4H (12 x 100 mm)

HS5H (16 x 130 mm)



ONDERDELEN VOOR HS-UPH

ACCESSOIRES POUR SERIE HS

HS-LSP **Onderplaat**
Plaque inférieure

Art.N° a mm F mm c mm

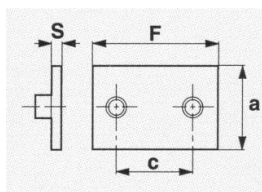
HS1LSP 30 77 33

HS2LSP 30 87 45

HS3LSP 30 103 60

HS4LSP 45 140 90

HS5LSP 60 180 122



BUIZEN & TOEBEHOREN/TUBES & ACCESSOIRES

ONDERDELEN VOOR "HEAVY DUTY" / ACCESSOIRES POUR "HEAVY DUTY"

ONDERDELEN VOOR STAPELBARE

KLEMMEN

ACCESSOIRES POUR SUPPORT

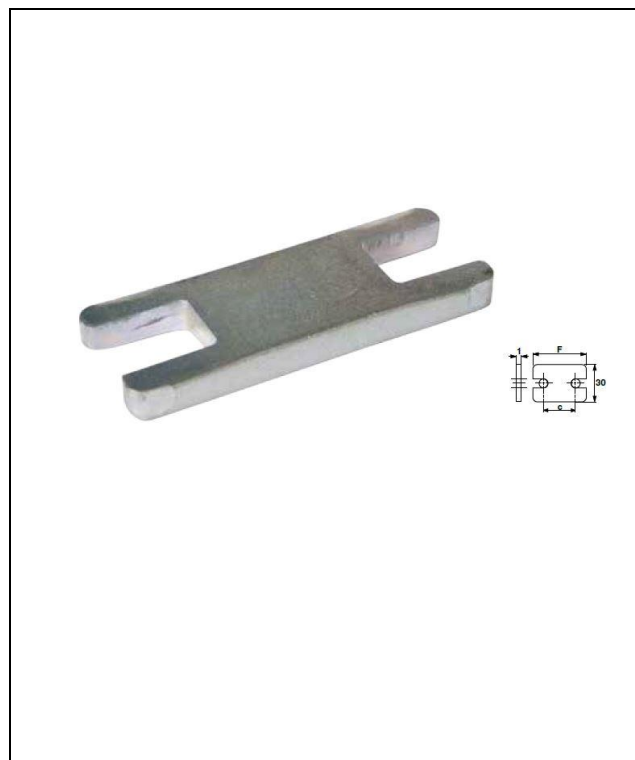
D'EMPILAGE

HS-SUP

Tussenplaat

Plaque intermédiaire

| Art.N° | X m/m | F m/m | C m/m |
|--------|-------|-------|-------|
| HS1SUP | 11 | 30 | 30 |
| HS2SUP | 13 | 30 | 30 |
| HS3SUP | 13 | 30 | 30 |
| HS4SUP | 13 | 30 | 30 |
| HS5SUP | 13 | 30 | 30 |
| | | | |
| | | | |



ONDERDELEN VOOR STAPELBARE

KLEMMEN

ACCESSOIRES POUR SUPPORT

D'EMPILAGE

HS-LI

Stapelbout

Vis intermédiaire d'empilage

| Art.N° |
|---------------------|
| HS1LI (10 x 26 mm) |
| HS2LI (10 x 41 mm) |
| HS3LI (10 x 52 mm) |
| HS4LI (12 x 83 mm) |
| HS5LI (16 x 110 mm) |
| |
| |

